



VAT Vakuumventile AG  
CH-9469 Haag, Schweiz

## Product data sheet

**Pendulum Isolation Valve, Series 162, DN 500 (ID 20")**  
**Ordering No. 16254-JA41**

### Description

Flange	JIS 500
Actuator	pneumatic, single acting with closing spring – with solenoid valve – with position indicator
Feedthrough	Rotary feedthrough

### Technical data

Leak rate	– Valve body – Valve seat	$< 1 \cdot 10^{-9}$ mbar ls <sup>-1</sup> $< 1 \cdot 10^{-9}$ mbar ls <sup>-1</sup>
Pressure range		$1 \cdot 10^{-7}$ mbar to 1.2 bar (abs)
Differential pressure on the gate		
– in closing direction		$\leq 1.2$ bar
– in opening direction		$\leq 1.2$ bar
Differential pressure at opening		
– in closing direction		$\leq 5$ mbar
– in opening direction		$\leq 5$ mbar
Conductance (molecular flow)		100 000 ls <sup>-1</sup>
Cycles until first service		200 000
Temperature	– Valve Body – Actuator – Solenoid valve – Position indicator	$\leq 120$ °C $\leq 50$ °C $\leq 50$ °C $\leq 50$ °C
(Maximum values: depending on operating conditions and sealing materials)		
Heating and cooling rate		$\leq 30$ °C h <sup>-1</sup>
Material	– Valve body, gate Sealing ring, feedthrough	EN AC– 42100 (3.2371), EN AW – 5083 (3.3547), EN AW 6082 (3.2315) AISI 304 (1.4301)
Seal	– Bonnet – Gate, dynamic – Feedthrough – Actuator	– FKM (Viton®) – FKM (Viton®) – FKM (Viton®) – FKM (Viton®) / NBR
Mounting position		horizontal
Volume of pneumatic actuator		1.4 l / 0.047 ft <sup>3</sup>
Compressed air		5 – 7 bar / 73 – 102 psi
min. – max. overpressure		
Compressed air connection		G 1/8" (1/8" NPT for USA)
Actuation time	– closing – opening	10 s 10 s
Weight		110 kg / 243 lbs

Created by: SON	Release date: 2014-07-18	1 of 2
Modified by:	Release date:	<b>298814EA</b>



VAT Vakuumventile AG  
CH-9469 Haag, Schweiz

## Product data sheet

**Pendulum Isolation Valve, Series 162, DN 500 (ID 20")**  
**Ordering No. 16254-JA41**

Behavior in case of compressed air pressure drop – Valve closed  
– Valve open

valve remains closed  
valve closes

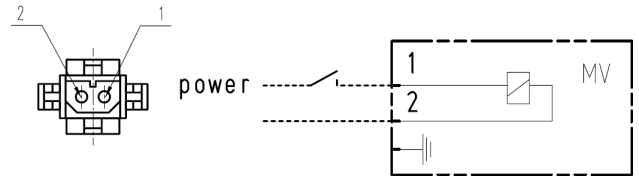
Behavior in case of power failure – Valve closed  
– Valve open

valve remains closed  
valve closes

### Electrical connections

#### Solenoid valve

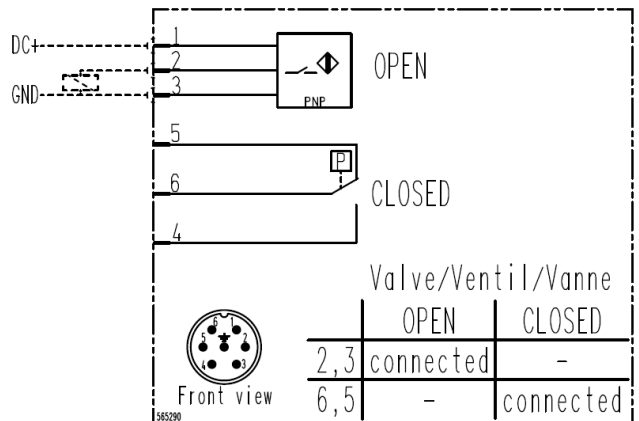
Type 4/2-way  
Voltage Defined by order  
Power required 5.4 Volt



MV= Coil of solenoid  
Wiring diagram

#### Position indicator

Rated operational voltage 24 V DC  
Load current capacity 0.1 A



Wiring diagram