



VAT Vakuumentile AG
CH-9469 Haag, Schweiz

PRODUCT DATA SHEET No. 233995EG

Vatterfly valve, Series 20, DN 63-200 (ID 2½'' - 8'')

Ordering No: **20 - . . . 44**



Description

Flanges and body shape according to dimensional drawing
 Actuator pneumatic, double acting
 with solenoid
 with position indicator
 Feedthrough rotary feedthrough

Technical data

Leak rate:
 - To the outside $< 1 \cdot 10^{-9}$ mbar ls⁻¹
 - Valve seat $< 1 \cdot 10^{-9}$ mbar ls⁻¹
 Pressure range $1 \cdot 10^{-8}$ mbar to 2 bar, abs
 Differential pressure on the plate ≤ 1.2 bar in opening direction
 ≤ 1.6 bar in closing direction
 Differential pressure at opening ≤ 0.5 bar
 Admissible temperature: 0 - 50°C
 Heating and cooling rate: $\leq 40^\circ\text{C h}^{-1}$
 Cycles until first service 100,000
 - under clean vacuum conditions
 Life cycle 500,000

		A: Aluminum body	E: Stainless Steel body
Material:	- valve body	Al Mg Si 1	1.4301
	- actuator	Aluminum	Aluminum
	- valve plate	Al Mg Si 1	1.4301
Seal	- bonnet seal	VITON®	VITON®
	- plate seal	VITON®	VITON®
	- pneumatic seals	VITON®	VITON®

Editor: M. Kienreich	Date: 03-10-22	Page 1 of 2
Replaced by	Replacement for	233995EG
Modification No.	Modification No.	



VAT Vakuumentile AG
CH-9469 Haag, Schweiz

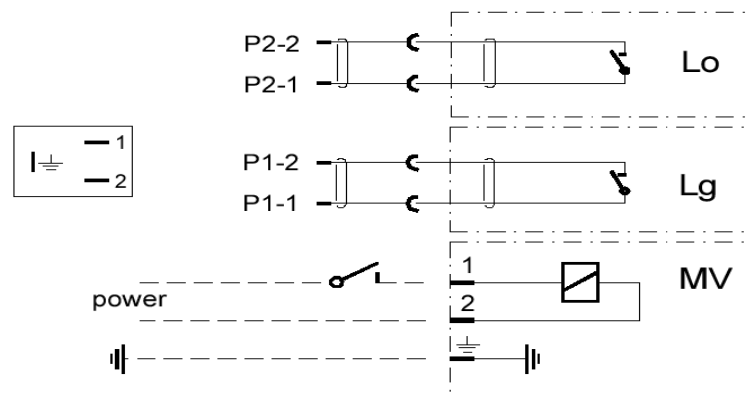
PRODUCT DATA SHEET No. 233995EG

Vatterfly valve, Series 20, DN 63-200 (ID 2½'' - 8'')

Solenoid	supply voltage	according to P. O. (refer to label of solenoid)
	required power	≤ 7.6 W
Position indicator:	Contact rating	0.5A/50VAC, 0.5A/75VDC, max. 10 W
Mounting position		any
Action at power failure	valve closed	no change
	valve open	valve closes
Action at compressed air failure		no change
Compressed air pressure for pneumatics		4 - 7 bar / 60 - 100 psi
Compressed air connection		R ⅛" female

Diameter code	36	38	40	44	46
Diameter	63 mm 2½"	80 mm 3"	100 mm 4"	160 mm 6"	200 mm 8"
Volume of air cylinder	0.04 l 0.0014 ft ³	0.08 l 0.003 ft ³	0.08 l 0.003 ft ³	0.13 l 0.0045 ft ³	0.3 l 0.01 ft ³
Opening / Closing time	0.4 s	0.8 s	0.8 s	1.4 s	1.8 s
Molecular flow conductance	550 ls ⁻¹	700 ls ⁻¹	1400 ls ⁻¹	4000 ls ⁻¹	7500 ls ⁻¹
Molecular flow conductance (extended body)	450 ls ⁻¹	600 ls ⁻¹	1050 ls ⁻¹	2550 ls ⁻¹	4700 ls ⁻¹
Weight (standard Aluminum body) 203 . . . A . .	2.3 kg 5.1 lbs	3.8 kg 8.4 lbs	4 kg 8.8 lbs	7.4 kg 16.3 lbs	16.1 kg 35.5 lbs
Weight (standard Stainless Steel body) 203 . . . E . .	4.6 kg 10.1 lbs	7.5 kg 16.5 lbs	8 kg 17.6 lbs	15.6 kg 34.4 lbs	34.2 kg 75.4 lbs
Weight (extended Aluminum body) 204 . . . A . .	2.5 kg 5.5 lbs	4.2 kg 9.3 lbs	4.7 kg 10.4 lbs	9.7 kg 21.4 lbs	21.3 kg 47 lbs
Weight (extended Stainless Steel body) 204 . . . E . .	5.3 kg 11.7 lbs	8.5 kg 18.7 lbs	10.1 kg 22.3 lbs	22.3 kg 49.2 lbs	20.8 kg 45.9 lbs

Wiring diagram :



Lo = Position indicator „open“

Lg = Position indicator „closed“

MV = Coil solenoid valve

Editor: M. Kienreich	Date: 03-10-22	Page 2 of 2
Replaced by	Replacement for	233995EG
Modification No.	Modification No.	