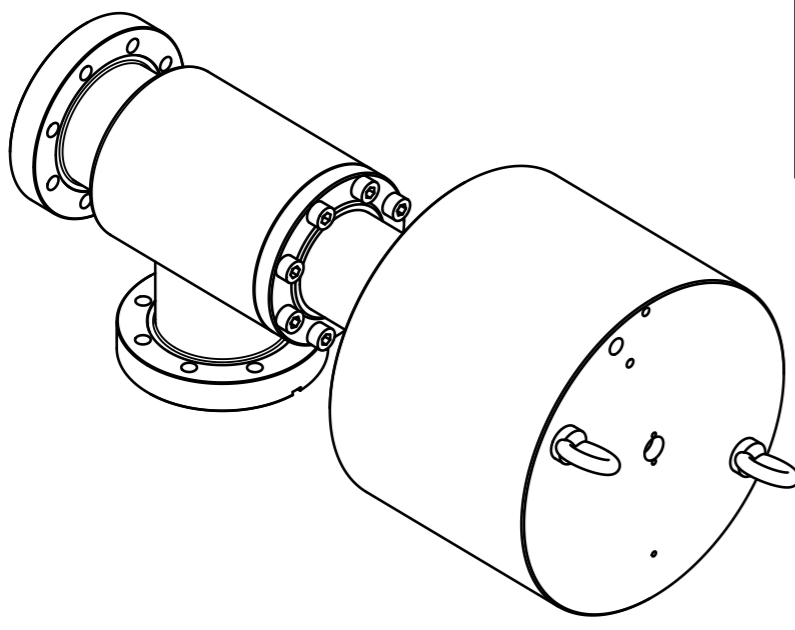
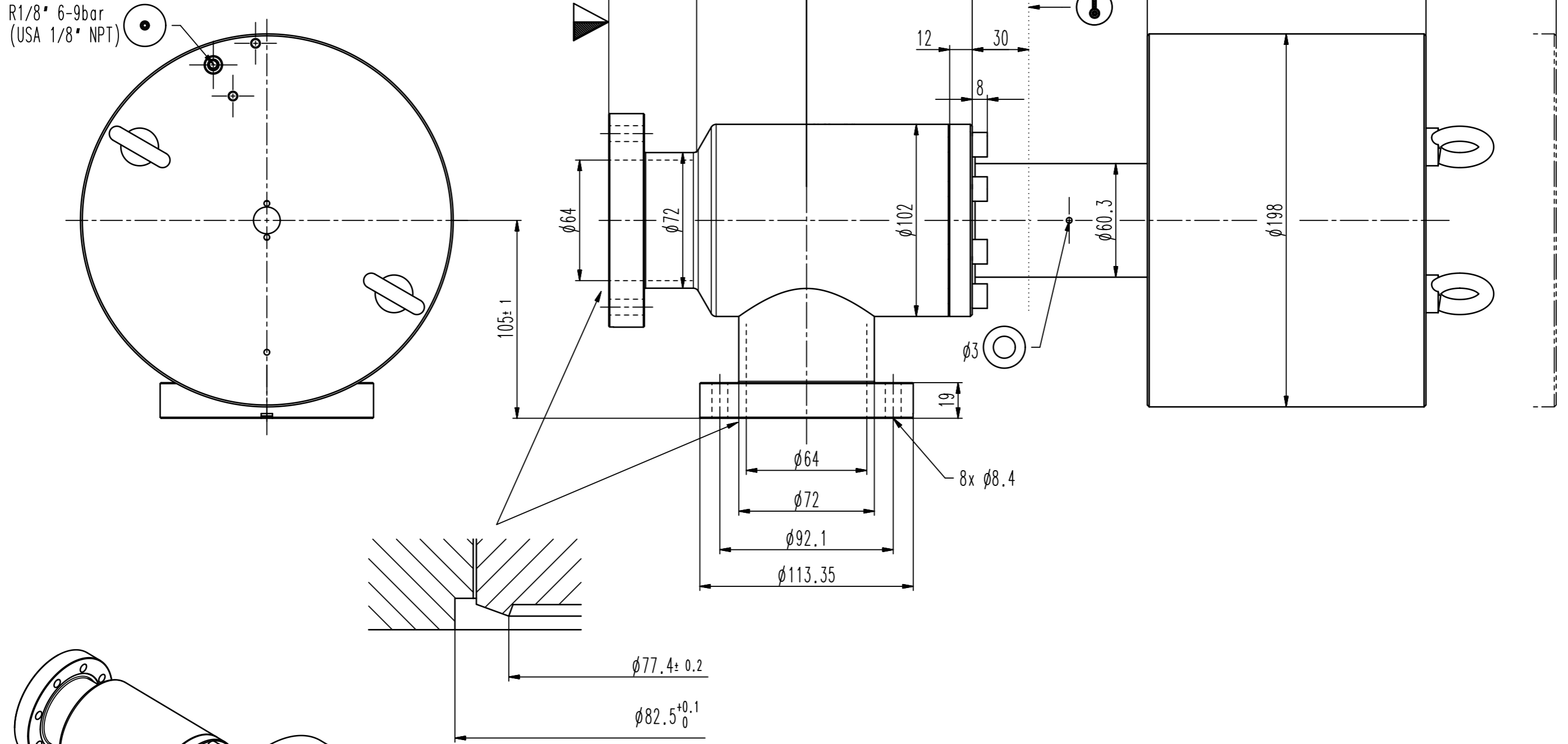


This drawing is the property of VAT.

Revision

Customer number

R1/8" 6-9bar
(USA 1/8" NPT)



- ▼ Seat side
- Comp. air connection
- Electrical connection
- Leak detection port
- Mech. pos. indication
- Position indicator
- Required for dismantling
- Emergency actuation
- For attachment
- Bake-out area
- Differential pumping port

All-metal angle valve



VAT Vakuumentile AG
CH-9469 Haag, Switzerland
Tel ++41 81 7716161 Fax ++41 81 7714830

Rev.-Date: 11.04.13
Visa: DUM

Series	570	Ordering No.	57036-GE11-0002
Projection E	DN	Flange	
	63	CF-R	
Dimensional Drawing	589164	Rev.	