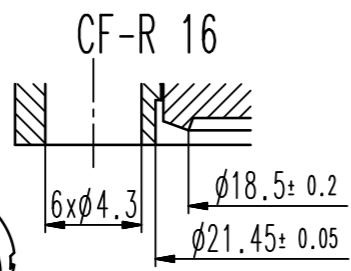
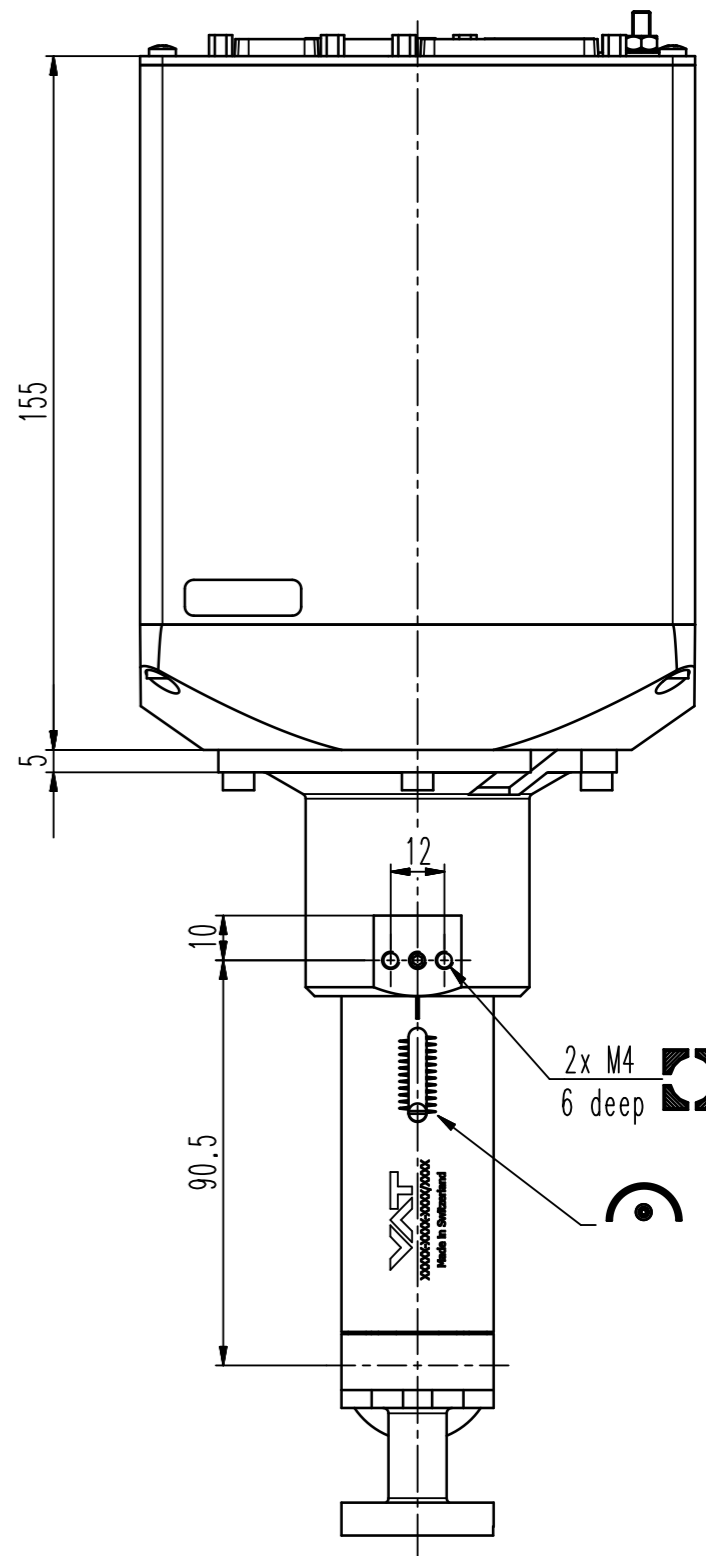
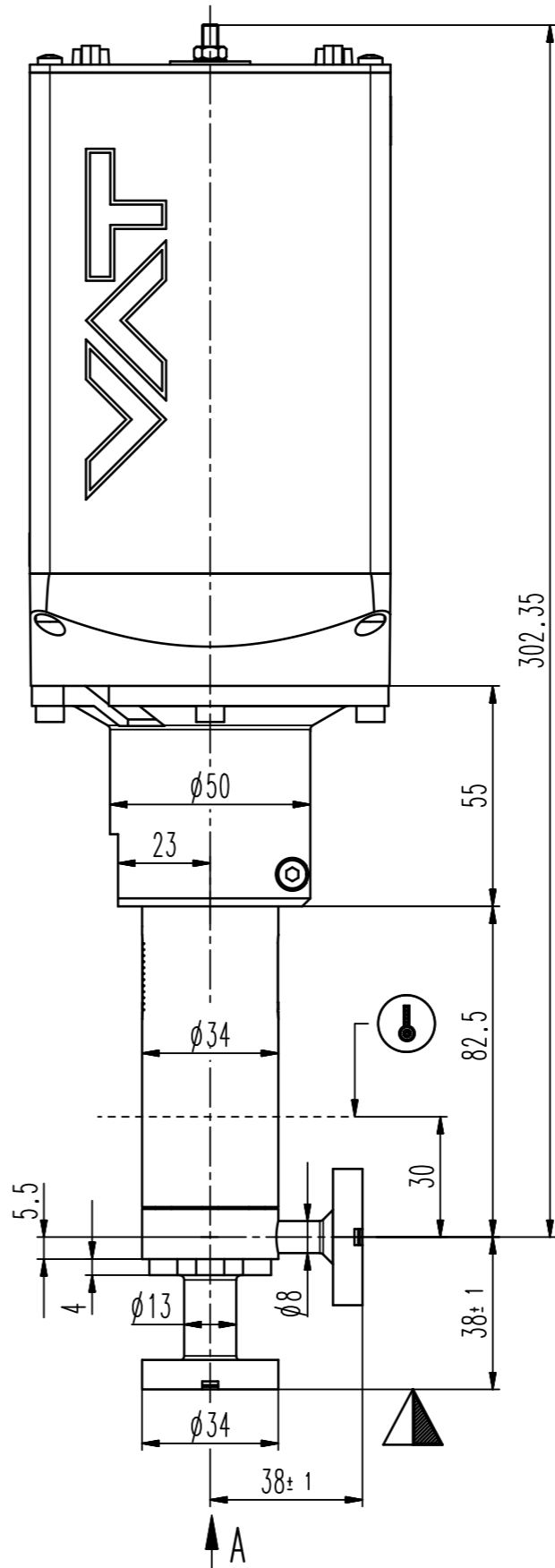
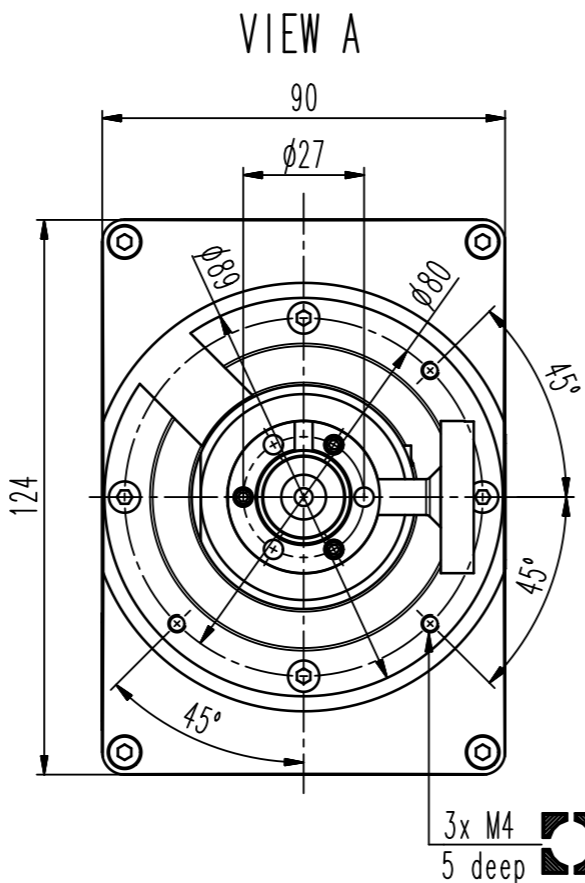
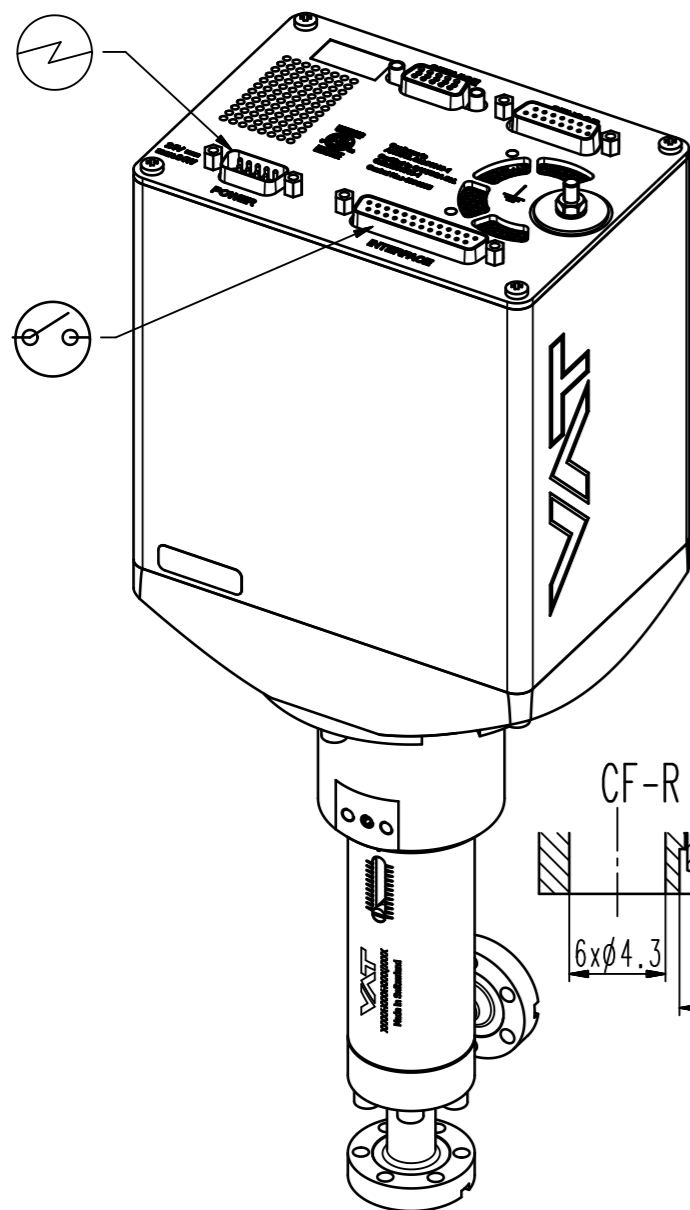


Connectors		
	Description	Type
POWER	Power input	DB-9 male
SENSOR	Sensor input Sensor power supply	DB-15 female
INTERFACE	RS 232 interface	DB-25 female



- ▼ Seat side
- ⊙ Comp. air connection
- ⊙ Electrical connection
- ⊙ Leak detection port
- ⊙ Mech. pos. indication
- ⊙ Position indicator
- ⊙ Required for dismantling
- ⊙ Emergency actuation
- ⊙ For attachment
- ⊙ Bake-out area
- ⊙ Differential pumping port

All-metal variable leak valve  
RS232 interface / 1 sensor



VAT Vakuumentile AG

CH-9469 Haag, Switzerland  
Tel ++41 81 7716161 Fax ++41 81 7714830

Rev.-Date: 10.03.15

Visa: LBR

Series	590	Ordering No.	59024-GEGG-0003
Projection E	DN	Flange	CF-R
	16		
Dimensional Drawing	790401	Rev.	