



VAT Vakuumventile AG
CH-9469 Haag, Schweiz

Product data sheet

Beam Stopper, Series 79, DN 100 (ID 4")

OSL-Article No. 79040-CE24-0005

Description

| | |
|-------------|--|
| Flange | DN 100 CF-F |
| Actuator | pneumatic double acting, with position indicator, without solenoid |
| Feedthrough | bellows |

Technical data

| | |
|--|--|
| Leak rate | |
| - To the outside | $< 5 \cdot 10^{-10}$ mbar ls ⁻¹ |
| Pressure range | UHV to 1 bar (abs) |
| Test pressure | 1 bar |
| Cycles until first service | $\leq 5'000$ |
| Bake-out temperature | |
| - body | $\leq 250^{\circ}\text{C}$ |
| - Pneumatic actuator | $\leq 80^{\circ}\text{C}$ |
| - Position indicator | $\leq 80^{\circ}\text{C}$ |
| Heating and cooling rate | $\leq 80^{\circ}\text{C h}^{-1}$ |
| Material | |
| - Body | 1.4301, AISI 304 |
| - Flange | 1.4301, AISI 304 |
| - Absorber | copper |
| - Bellows | 1.4435, AISI 316 L |
| Absorber (water cooled) | |
| - max. beam load $\varnothing < 60$ mm | 5 kW |
| - max. beam load $\varnothing > 60$ mm | 6 kW |
| - max. density | 25 W/mm ² |
| Seal | |
| - Bonnet | metal |
| Mounting position | any |
| Position indicator | |
| - Contact rating | ≤ 50 V AC / DC 1.2A |
| Radiation resistance | |
| - Actuator | 10 ⁵ Gy (10 ⁷ rad) |
| - Position indicator | 10 ⁵ Gy (10 ⁷ rad) |

| | | |
|------------------------------|--------------------------|-----------------|
| Created by: Kurt Sonderegger | Release date: 09.04.2009 | Page 1 of 2 |
| Modified by: | Release date: | 279118EA |



VAT Vakuumventile AG
CH-9469 Haag, Schweiz

Product data sheet

Beam Stopper, Series 79, DN 100 (ID 4")

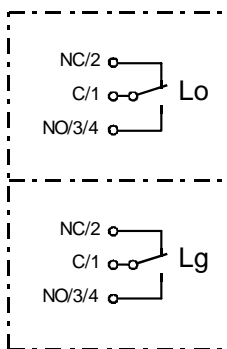
OSL-Article No. 79040-CE24-0005

| | |
|---|------------------------------|
| Compressed air pressure min. - max. (overpressure) | 4 - 7 bar / 55 - 100 psig |
| Volume of air cylinder | 0.49l / 0.01 ft ³ |
| Compressed air connection | R 1/8" (USA: 1/8" NPT) |
| Cooling water | |
| - min. quantity of cooling water | 15 l/min |
| - max. water temperatur (supply) | 15°C |
| - max. cooling water pressure | 8 bar |
| Cooling water connection | R 1/4" (USA: 1/4" NPT) |
| Action at power failure | |
| - beamstopper closed | depends on control |
| - beamstopper open | depends on control |
| Action at compressed air failure | |
| - beamstopper closed | undefined |
| - beamstopper open | undefined |
| Closing time | ≤ 2.0 s |
| Opening time | ≤ 2.0 s |
| Weight | appr. 22 kg / 50 lbs |

Attachments

Dimensional drawing No. 401826

Wiring diagram



Lo = position indicator «open»
Lg = position indicator «closed»

| | | |
|------------------------------|--------------------------|-----------------|
| Created by: Kurt Sonderegger | Release date: 09.04.2009 | Page 2 of 2 |
| Modified by: | Release date: | 279118EA |