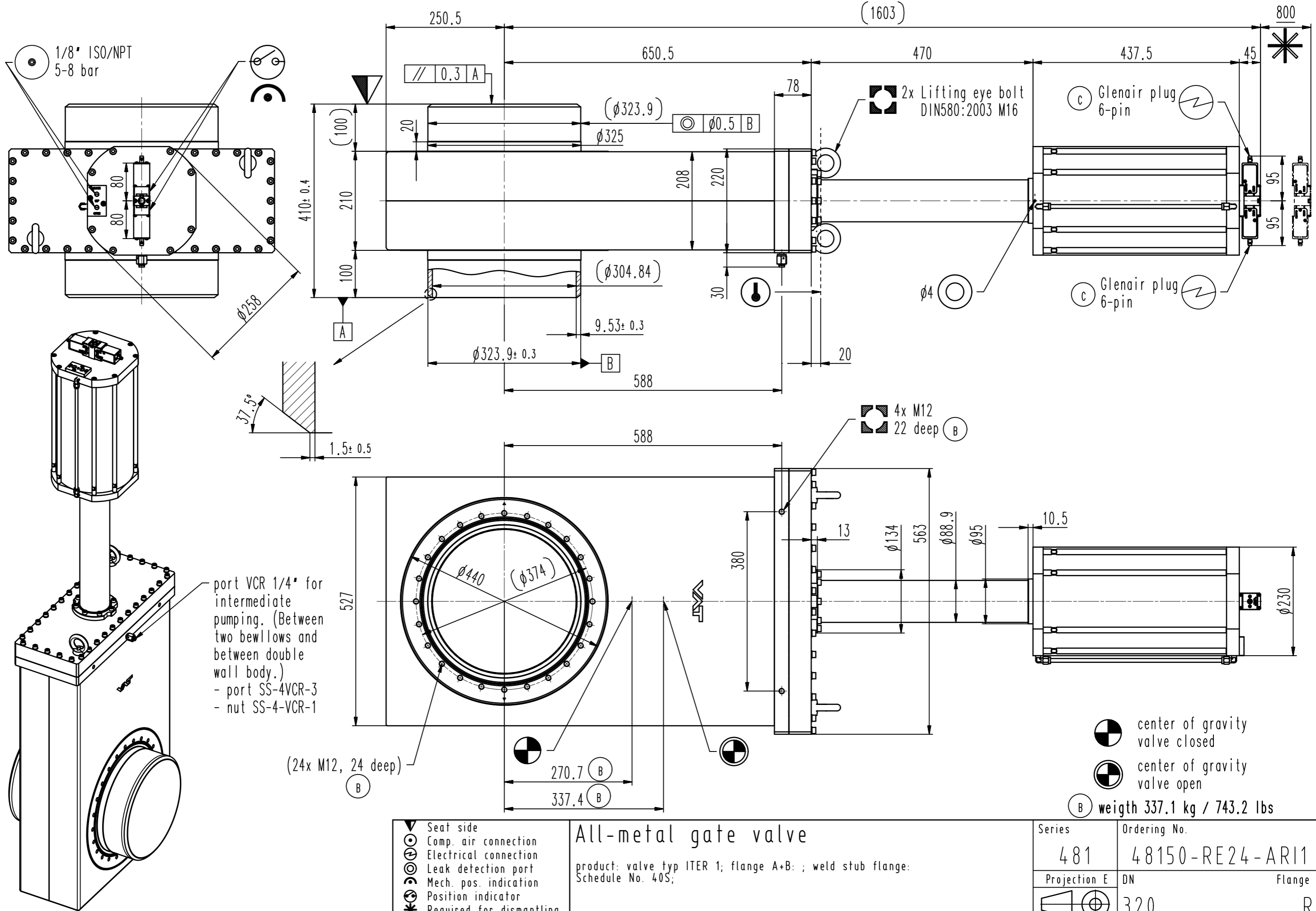


This drawing is the property of VAT.

Revision

Customer number



port VCR 1/4" for intermediate pumping. (Between two beflows and between double wall body.)  
 - port SS-4VCR-3  
 - nut SS-4-VCR-1

center of gravity valve closed  
 center of gravity valve open

weight 337.1 kg / 743.2 lbs

- Seat side
- Comp. air connection
- Electrical connection
- Leak detection port
- Mech. pos. indication
- Position indicator
- Required for dismantling
- Emergency actuation
- For attachment
- Bake-out area
- Differential pumping port

**All-metal gate valve**  
 product: valve typ ITER 1; flange A+B; ; weld stub flange:  
 Schedule No. 40S;

**VAT** Vakuumentile AG  
 CH-9469 Haag, Switzerland  
 Tel ++41 81 7716161 Fax ++41 81 7714830

Rev.-Date: 20.05.20  
 Visa: MAT

Series	481	Ordering No.	48150-RE24-AR11
Projection E	DN	Flange	R
	320		
Dimensional Drawing	750682	Rev.	C