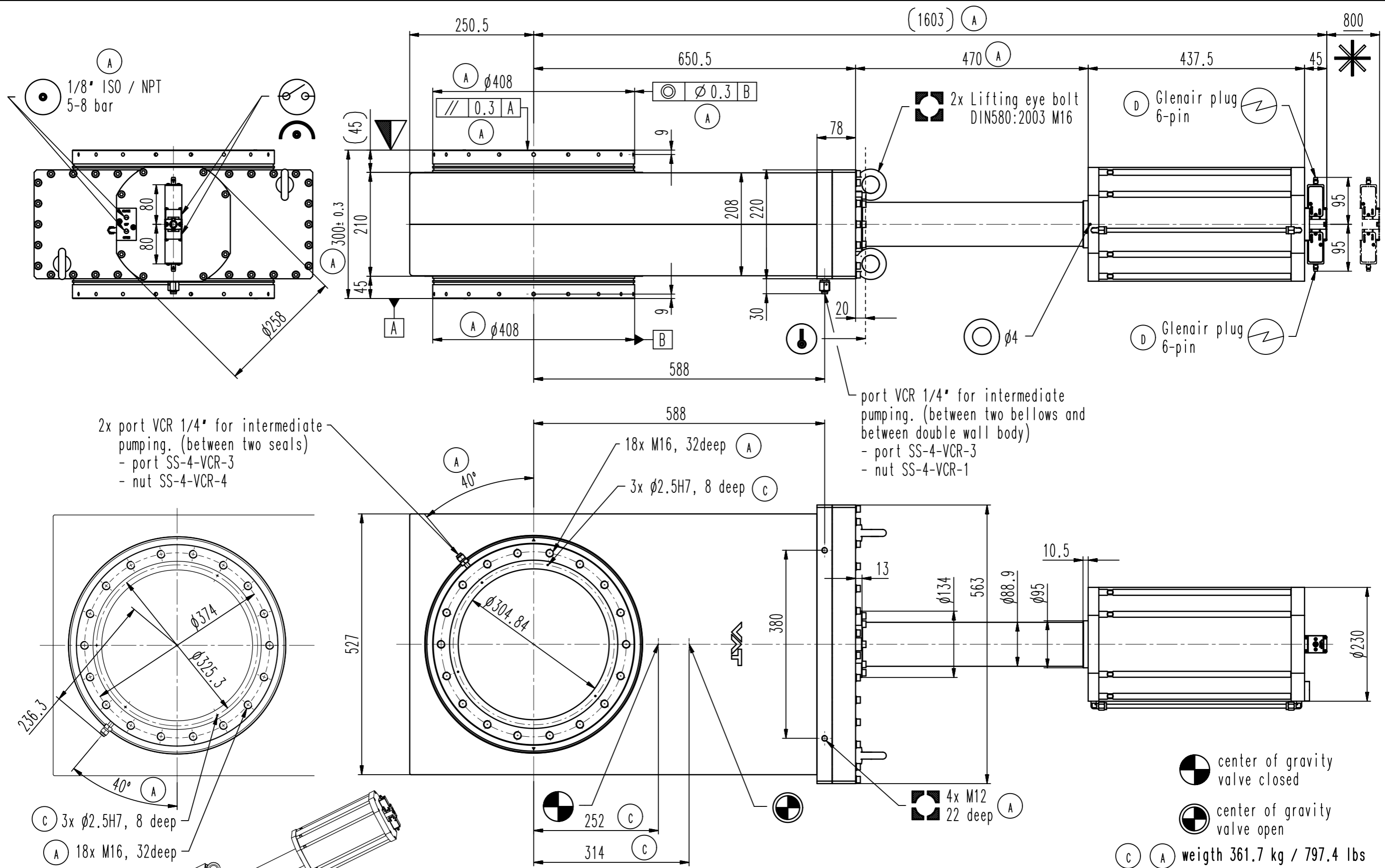


This drawing is the property of VAT.

Revision

Customer number

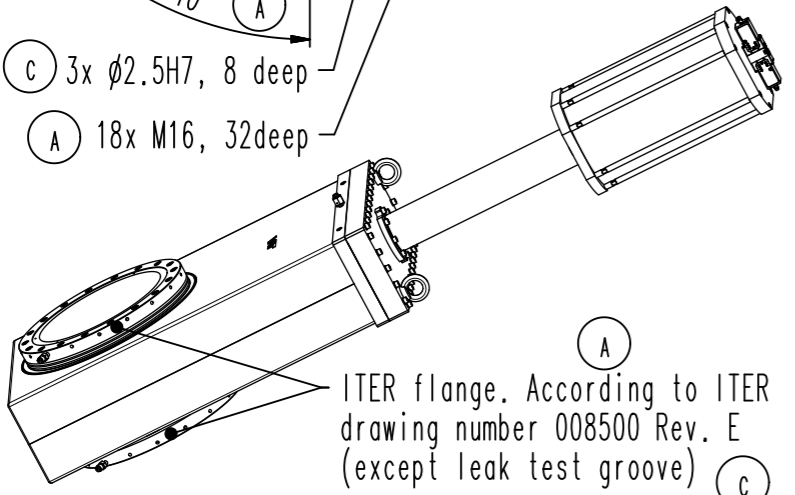


2x port VCR 1/4" for intermediate pumping. (between two seals)  
 - port SS-4-VCR-3  
 - nut SS-4-VCR-4

port VCR 1/4" for intermediate pumping. (between two bellows and between double wall body)  
 - port SS-4-VCR-3  
 - nut SS-4-VCR-1

center of gravity valve closed  
 center of gravity valve open

weight 361.7 kg / 797.4 lbs



- Seat side
- Comp. air connection
- Electrical connection
- Leak detection port
- Mech. pos. indication
- Position indicator
- Required for dismantling
- Emergency actuation
- For attachment
- Bake-out area
- Differential pumping port

### All-metal gate valve

product: valve typ ITER 1; flange A+B: ; type ITER;



VAT Vakuumentile AG  
 CH-9469 Haag, Switzerland  
 Tel ++41 81 7716161 Fax ++41 81 7714830

Rev.-Date: 20.05.20  
 Visa: MAT

Series	481	Ordering No.	48150-XE24-APV1
Projection E	DN	Flange	X
Dimensional Drawing	320		
	750717		