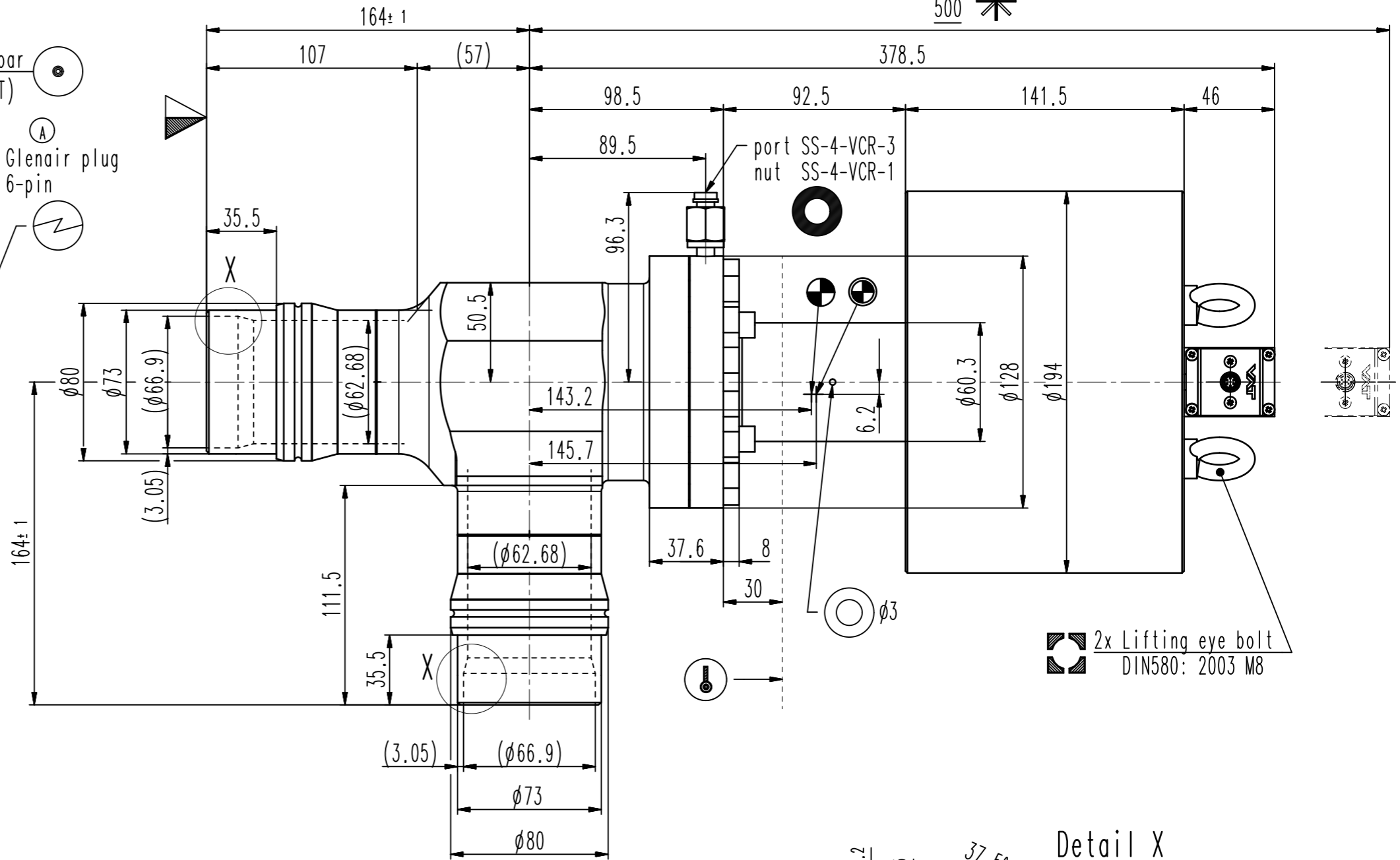
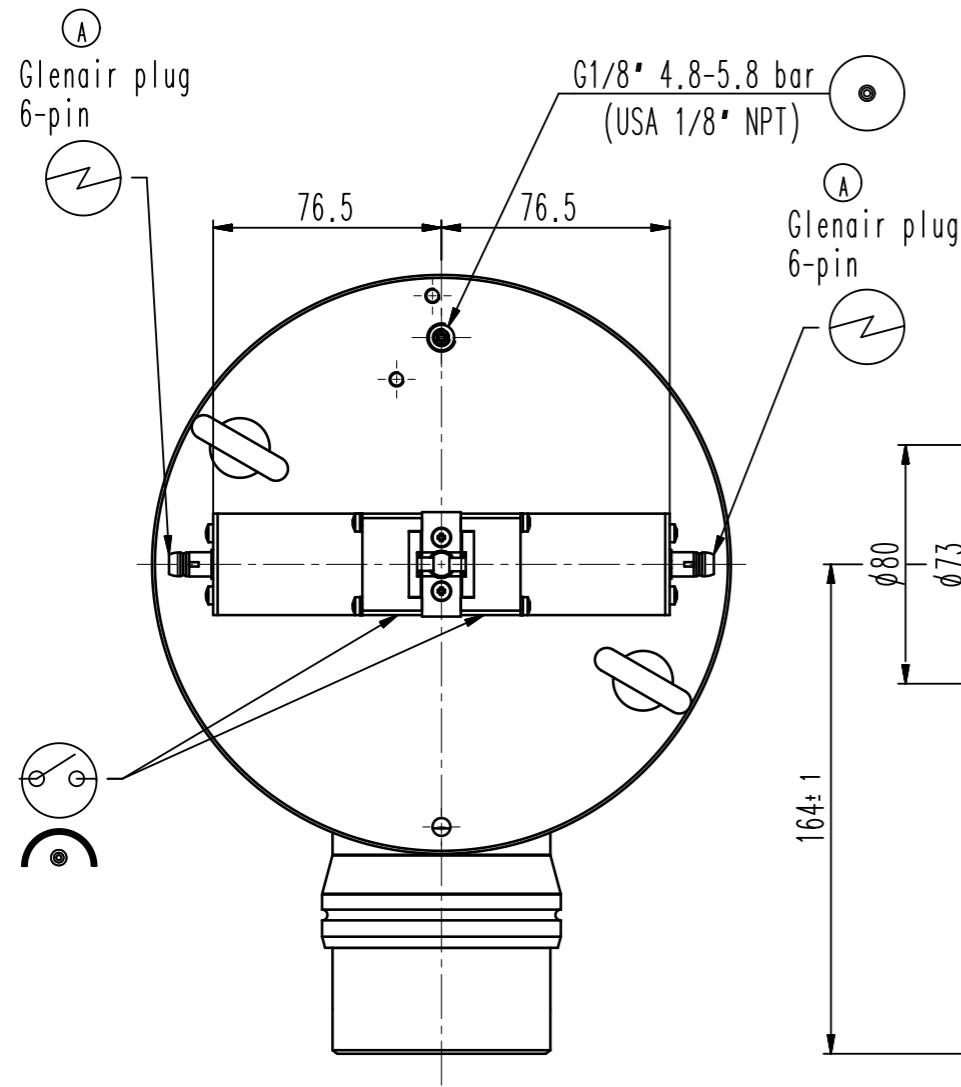


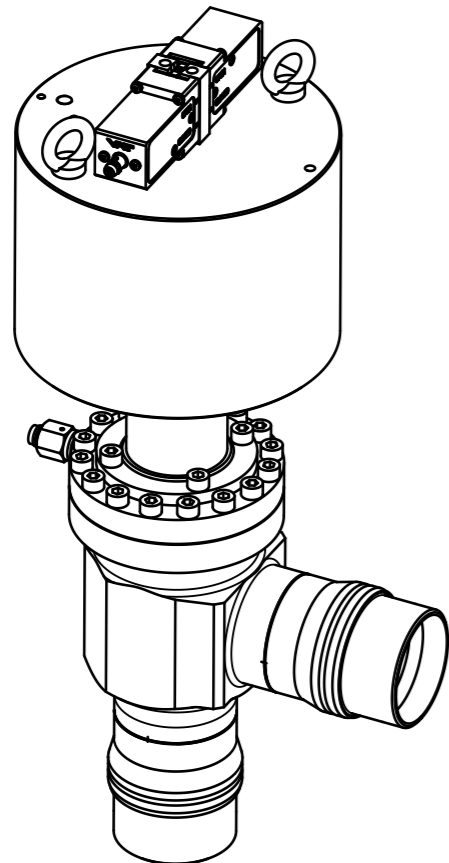
This drawing is the property of VAT.

Revision

Customer number



2x Lifting eye bolt
DIN580: 2003 M8

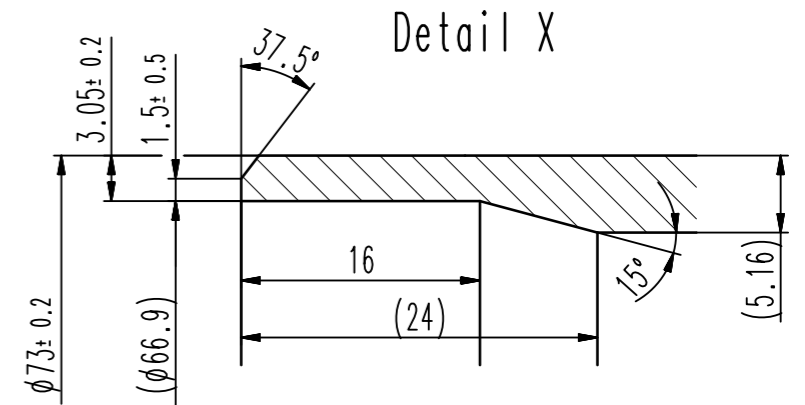


weight: 18.8 kg / 41.4 lbs

○ port VCR 1/4" for intermediate pumping
(between two bellows and between two head-flange-seals)

◐ center of gravity
valve closed

◑ center of gravity
valve open



- ▽ Seat side
- ⊙ Comp. air connection
- ⊕ Electrical connection
- ⊖ Leak detection port
- ⊗ Mech. pos. indication
- ⊘ Position indicator
- ⊙* Required for dismantling
- ⊙ Emergency actuation
- ⊙ For attachment
- ⊙ Bake-out area
- ⊙ Differential pumping port

All-metal angle valve

product: valve typ ITER 52; flange A+B; ; weld stub flange:
Scheduel No. 10S;



VAT Vakuumventile AG

CH-9469 Haag, Switzerland
Tel ++41 81 7716161 Fax ++41 81 7714830

Rev.-Date: 11.06.20

Visa: LBR

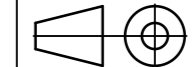
Series

570

Ordering No.

57036-RE22-AJH1

Projection E



DN

63

Flange

R

Dimensional
Drawing

994436

Rev.

A

VAT/DA